



HEALTH AND SAFETY IN CHALLENGING ENVIRONMENTS

Afghanistan and Kuwait

Sylvia Fontes, CIH
Health and Safety Director

California Industrial Hygiene Council
12-05-14





1

TRAVEL

2

SECURITY/SAFETY

3

MEDICAL ASSISTANCE

4

CONSTRUCTION & CULTURE



Camp Parham

Camp Bastion

Kabul

Shindand Air Base

Kandahar

Afghanistan

1

TRAVEL



TRAVEL PREPARATION

- Letter of Authorization
- Common Access Card
- Visa
- Work Permit
- Medical exam
- Shot record
- Passport
- Body armor
- Travel up to 23 hours



TRAVEL CONCERNS CASE STUDY

- SYMPTOMS:
 - ❑ 2 days after returning home
 - ❑ Calf swollen
 - ❑ Pain
- TESTS
 - ❑ Ultrasound
- DIAGNOSIS
 - ❑ Deep Vein Thrombosis (DVT)
 - ❑ One solid clot from knee to ankle



SHORT TERM ISSUES

Barred from:

- Flying
- Motorcycle riding
- Bicycle riding
- Restrict weight lifting

LONG TERM ISSUES

- Permanent damage to valves in veins
- Predisposed to poor circulation
- Predisposed to repeat episode
- Long term use of compression socks
- Careful when flying – move legs, aisle seat, walk
- Avoid sitting for more than 1 hour at a time

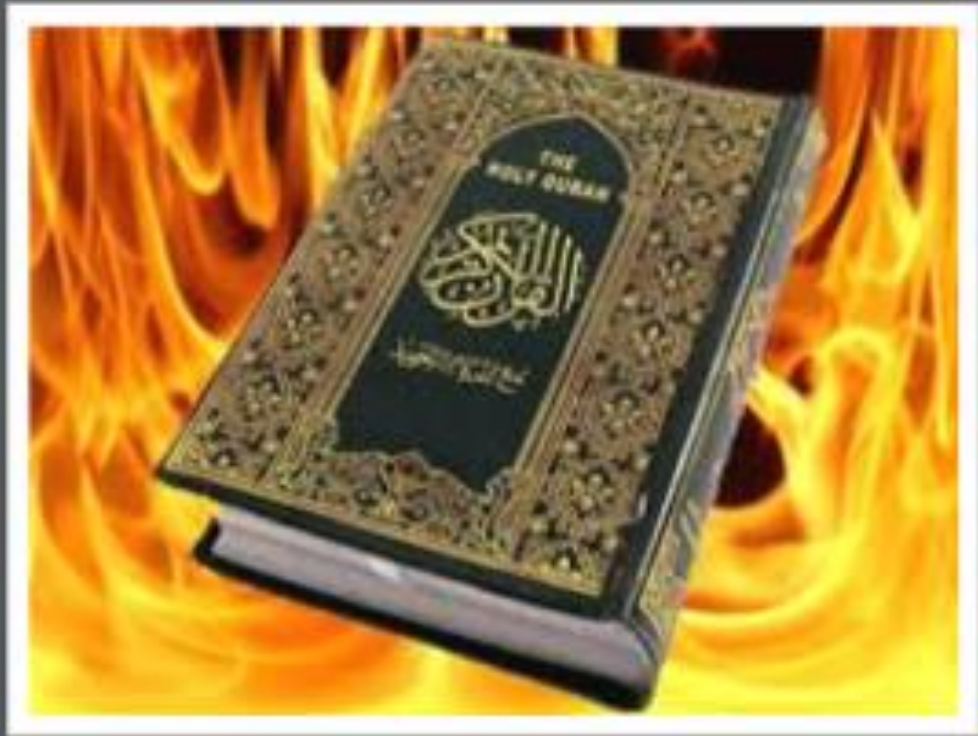
“Four Taliban militants who attacked a compound housing foreign workers in the Afghan capital were killed Wednesday night in a failed assault there, police said, the latest violence targeting foreigners in the country.” 11-19-14

2

SAFETY AND SECURITY

INTELLIGENCE REPORTS

- Military Intelligence
- Commercial Environment
- Former Colleagues and friends
- U.S. Embassy
- Afghan Police ?
- British Embassy
- Locals
- Situational Awareness



OUTSIDE PERIMETER

- Game on!



SUICIDE BOMB REPORTED

- Just FYI - There was a suicide bomber attacked the MOD ECP this morning (not the one we use - the other side by the main road and river).
- This was followed by some heavy gun fire - although, at this stage - we do not know if it was ANA or enemy fire.
- All our people are accounted for and safe.
- Will forward on any decent reports when I get them.



TYPICAL EMAIL SECURITY FOLLOW UP

- Just an FYI, tonight finds me on the way to Kabul and I am in Dubai. I did check with Dave (our current security lead – others are on R&R) and all of our Kabul staff are accounted for. Our risk management helped us keep folks from harm's way. Based on the recommendation of our security lead, we allowed only essential moves for the days around Christmas. This attack occurred near one of our sites and we have had no movements there for the last few days – or thru the 26th of December.

Sylvia, the US Government is rating the roads Amber today (Have been red since before Christmas) and we are moving today. We have some concern for the snow falling, but today is the first day we have moved since the 23rd. Folks are doing fine and a few are down because of missing families, but we will be ok. Thanks for checking on us!



MORNING UPDATE

- ...as you wake up, you and many others might see this on the news. We are all accounted for and the incident occurred before we even began our daily movements. We will remain on lockdown till the situation clears and conditions permit travel. Darren is in communication with his security network and is keeping us up to date. Just did not want you guys to worry when you saw the morning news.





MEDICAL ASSISTANCE

03

INJURIES

- 2nd and 3rd Degree Burns
- Laceration to head
- Bee sting to feet
- According to the safety officer on site, one of the workers working on the 2nd floor beams formwork was using a jobsite, wooden ladder. The ladder accidentally slid, the worker fell, and hit the started rebar and wounding his right thigh.



TRAVEL ASSISTANCE

- Downloadable pre-trip destination profile reports
 - Health risks
 - Security risks
 - Culture
 - Currency
 - Weather
 - Infrastructure
- Replacement of lost or stolen travel documents
- Emergency travel arrangements
- Transfer of funds
- Legal referrals
- Translation services
- Message transmittals



MEDICAL ASSISTANCE

- Worldwide medical and dental referrals
- Monitoring of treatment
- Facilitation of hospital payments
- Transfer of insurance information
- Medication, vaccine, and blood transfers
- Dispatch of doctors and specialists
- Transfer of medical records
- Continuous updates to family, employer and home physician
- Hotel arrangements for convalescence
- Replacement corrective lenses and medical devices





EVACUATION

- Emergency medical evacuations
- Transportation to join a hospitalized member
- Return of dependent children
- Transportation after stabilization
- Repatriation of mortal remains
- Political evacuation services
- Security evacuation services
- Transportation after political or security evacuation

MEDICAL EVACUATION

- Infection requiring hospitalization – evacuation required
- Aggravated back injury – evacuation required
- Respiratory problem at Camp Bastion – Hospital run by Brits
- Cracked tooth – downtown treatment or German Dentist at Camp Marmal



PERSONAL SECURITY

- Threat level designation assessments
- Security briefings
- Secure transportation and lodging

Country

Rating

Afghanistan

5: CfGIKPTW

Country Threat Level

1 - Very Low

2 - Low Threat

3 - Medium Threat

4 - High Threat

5 - Very High Threat

Country Threats

C: Crime

D: Demonstrations / Protests

E: Espionage

F: Ethnic Conflict

G: Graft / Corruption

I: Insurgency

K: Kidnapping

P: Political Stability

S: Sectarian Conflict

T: Terrorism

V: Elections

W: War



4

CONSTRUCTION



TELECOM COMMUNICATION SYSTEM INFRASTRUCTURES



WASTE WATER COLLECTION SYSTEM



PRISON INFRASTRUCTURE



POWER DISTRIBUTION SYSTEM



WATER TREATMENT PLANT EXPANSION



**JUNIOR OFFICER'S BARRACKS WITH SHARED ROOM –
STAGE II**

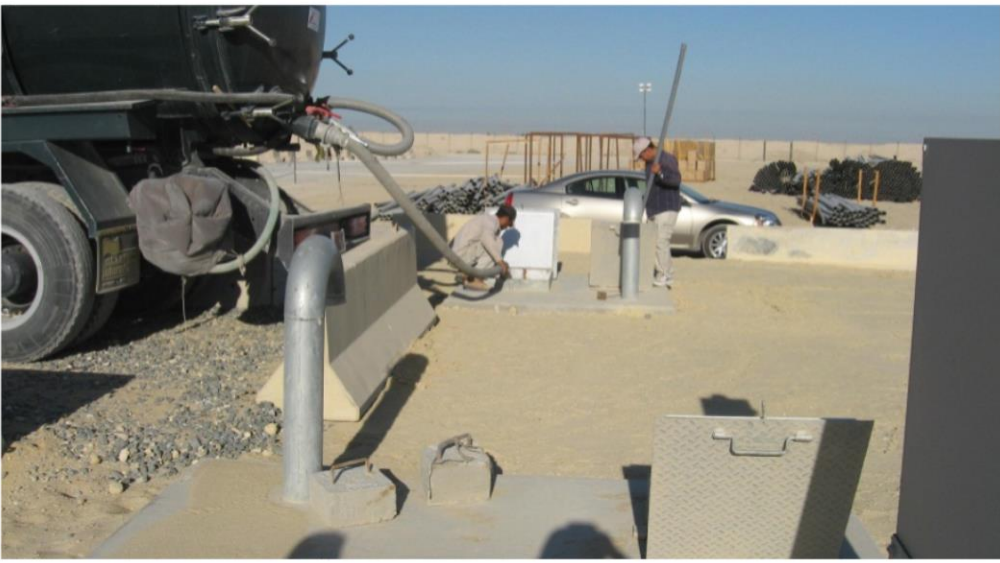
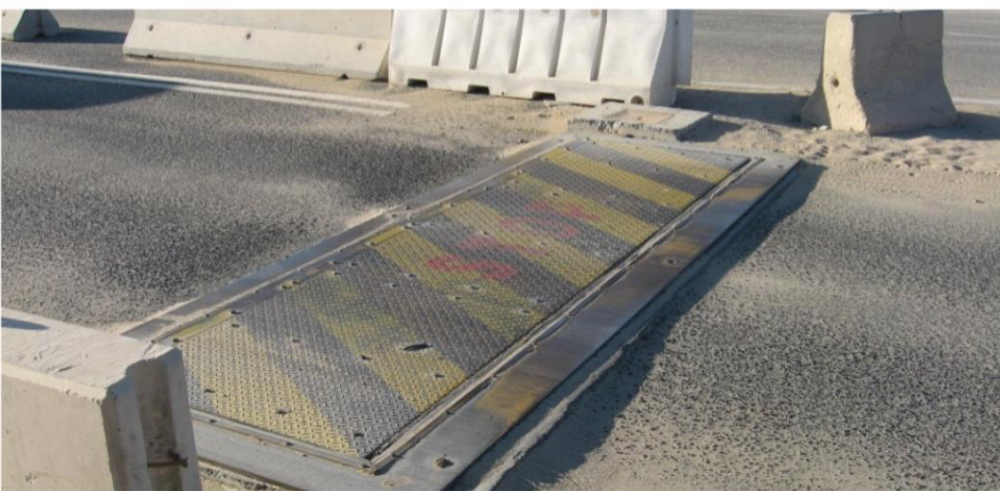
UNIT STORAGE





FENCING

LIFT STATIONS





CONSTRUCTION

THE SAFETY CULTURE IN AFGHANISTAN

- Spiderman 1



- Spiderman 2



Though wearing safety protection/harness but was only anchored to scaffolding or dowel bars not intended for lifeline use.

UNSAFE PRACTICE

– standing on the piece of rebar for form installation of 2nd floor slab



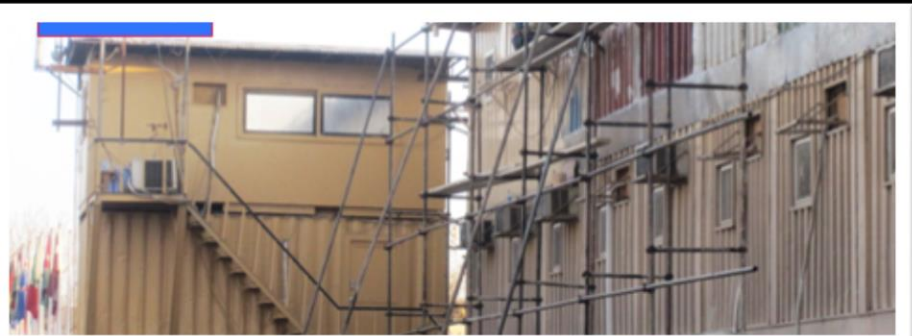
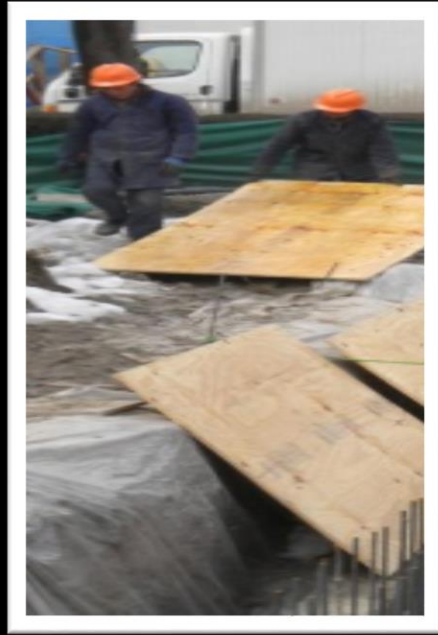
**A WORKER DOING THE
LINTEL BEAM
FORMWORK WAS USING
THE WINDOW SILL AS A
WORKING PLATFORM**



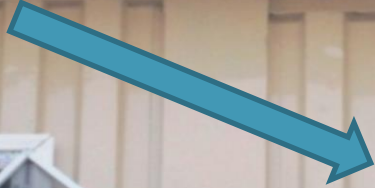


A WORKER MAKING A SHORT CUT GOING TO 3RD FLOOR LEVEL FROM 2ND TO 3RD FLOOR STAIRCASE

SAFE PRACTICES?



▪ Great fall protection



▪ Heating water



SELF EXPLANATORY?



AN END PRODUCT

