

Mindfulness: Promoting Total Worker Health & Safety by Being in the Moment



Jessica Drew de Paz, PsyD, Project Manager
Environmental Health & Safety, UC Irvine

University of California (UC)

- 10 campuses, 5 medical centers, 3 national labs
- > 233,000 students and > 190,000 employees



UC Office of the President (UCOP)

- Systemwide Headquarters
 - Manages fiscal & business operations
 - Supports academic & research missions



UCOP Office of Risk Services

- Implements Enterprise Risk Management
 - Includes UC Systemwide Centers of Excellence



Cheryl Lloyd
Chief Risk Officer



Ken Smith
Executive Director, EH&S



Mindful

HEALTH & SAFETY

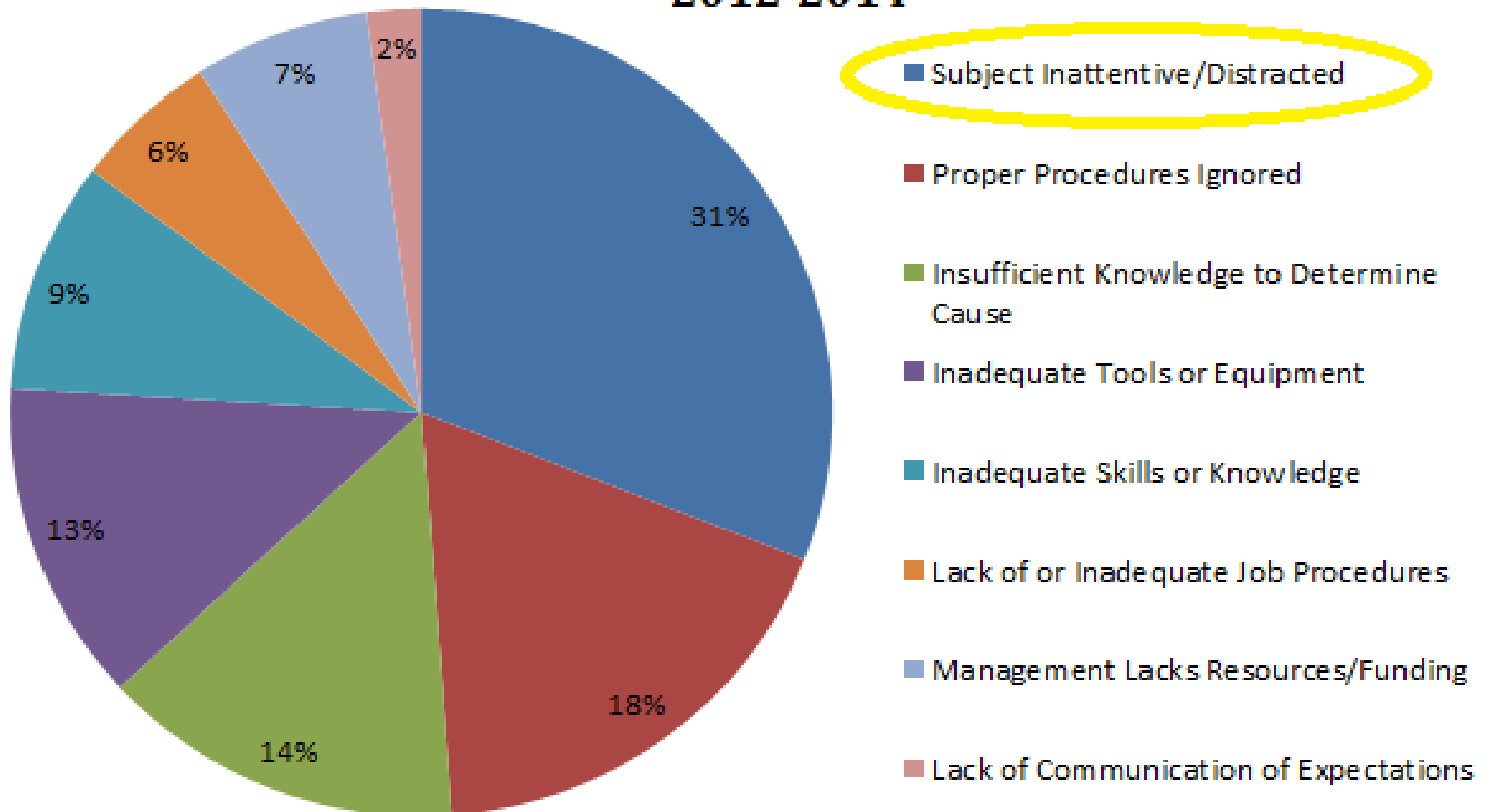
UNIVERSITY OF CALIFORNIA



TWO HATS

Safety Issue: Inattention/Distraction

UC Irvine Campus Employee Injuries: Root Cause Trends 2012-2014



Is inattention/distraction a safety hazard at your organization?



If so, how are you addressing it?

Existing Safety Trainings

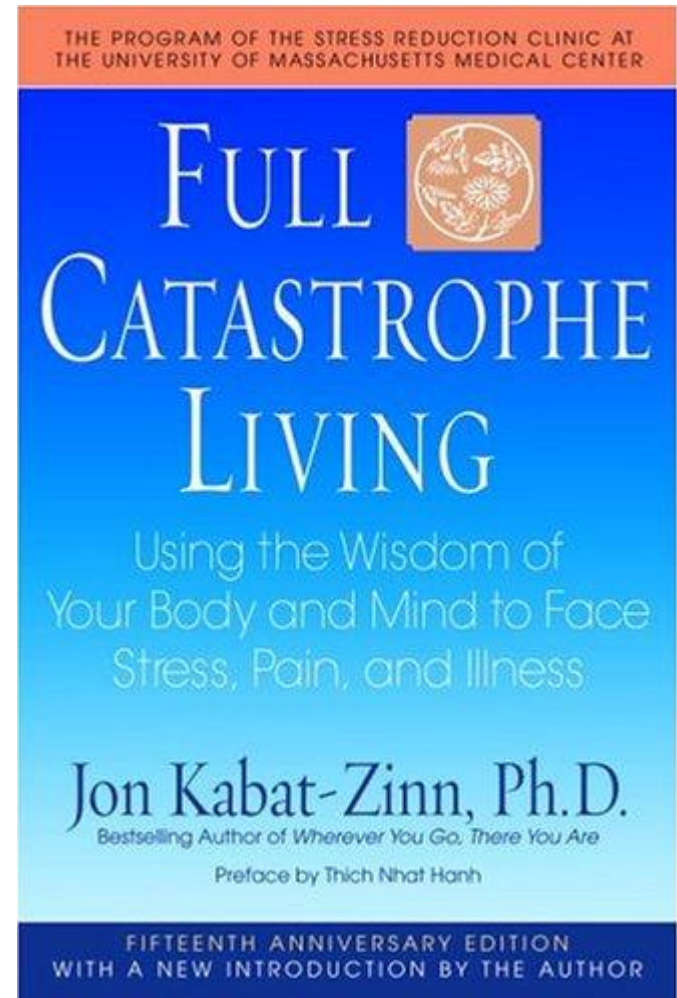
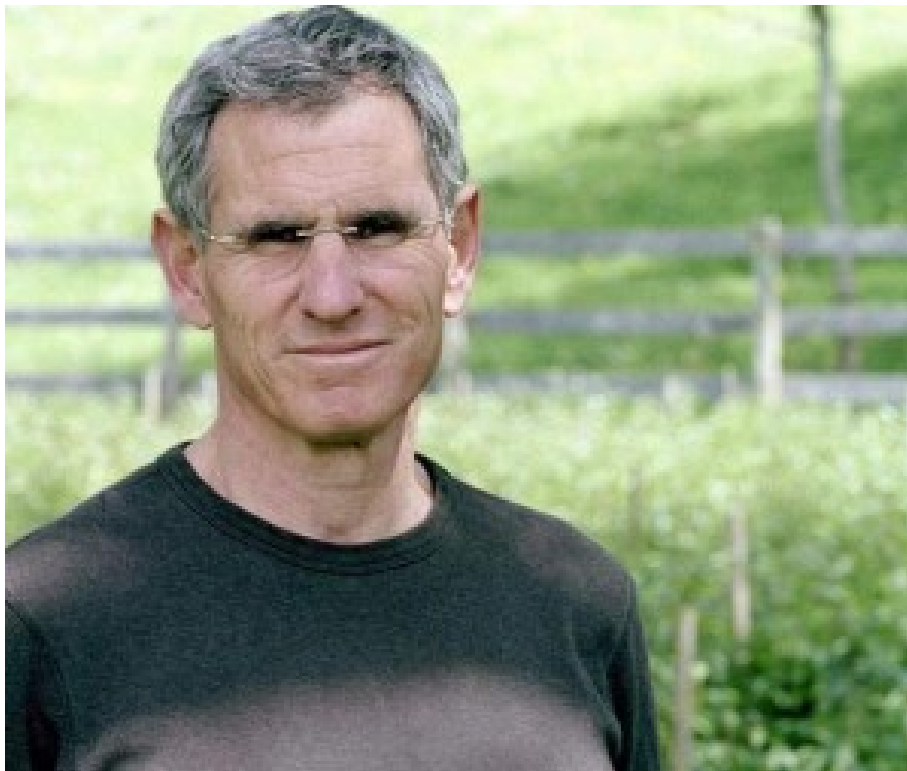


Solution: Mindfulness Training (Attention Training)



Mindfulness

Jon Kabat-Zinn, Ph.D.





Mindfulness-Based Stress Reduction (MBSR)

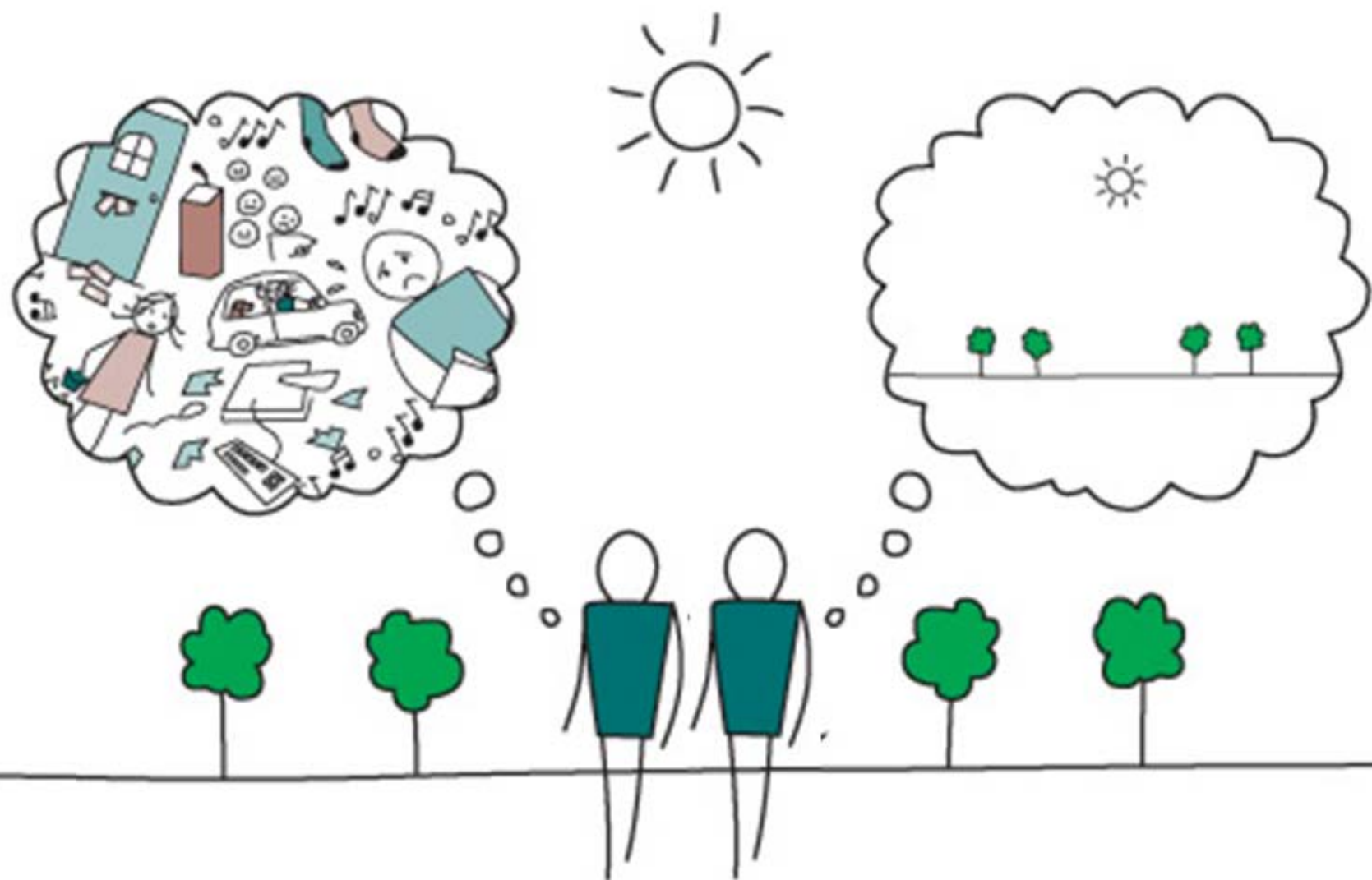
Formal Practices

- Body Scan
- Yoga-based movement
- Mindful Breathing
- Mindful Walking

Informal Practices

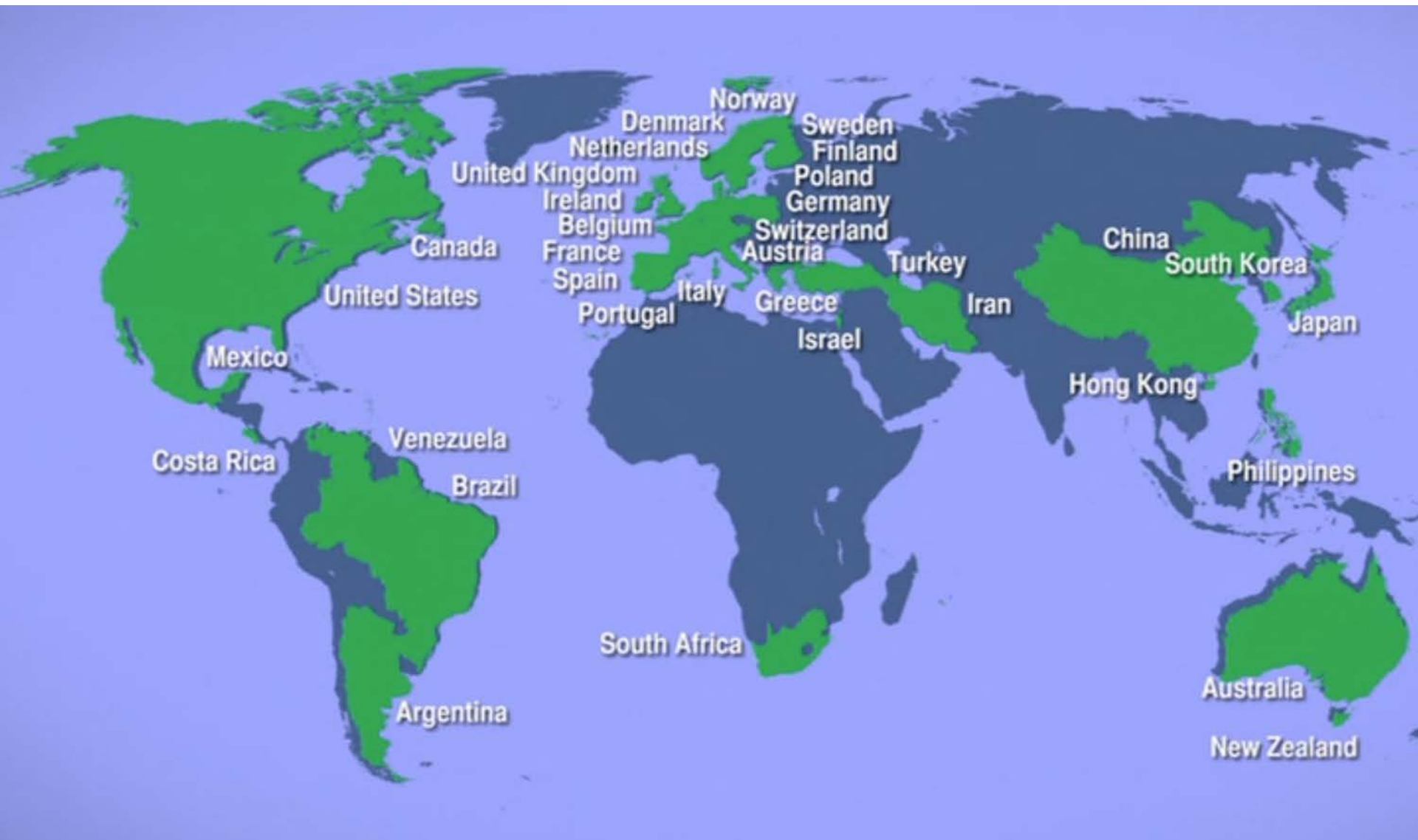
- Mindful Eating
- Mindful Driving
- Mindful Working
- Mindful of Any Moment!





Mind Full, or Mindful?

MBSR Offered Worldwide



Workplace Applications



SEARCH
INSIDE
YOURSELF



Anderson Cooper



FEBRUARY 3, 2014

Fleeing Syria Photographs by James Nachtwey / Peyton Power / Steve McQueen

TIME

THE
MINDFUL
REVOLUTION

The science of finding focus in a stressed-out, multitasking culture

BY KATE PICKERT

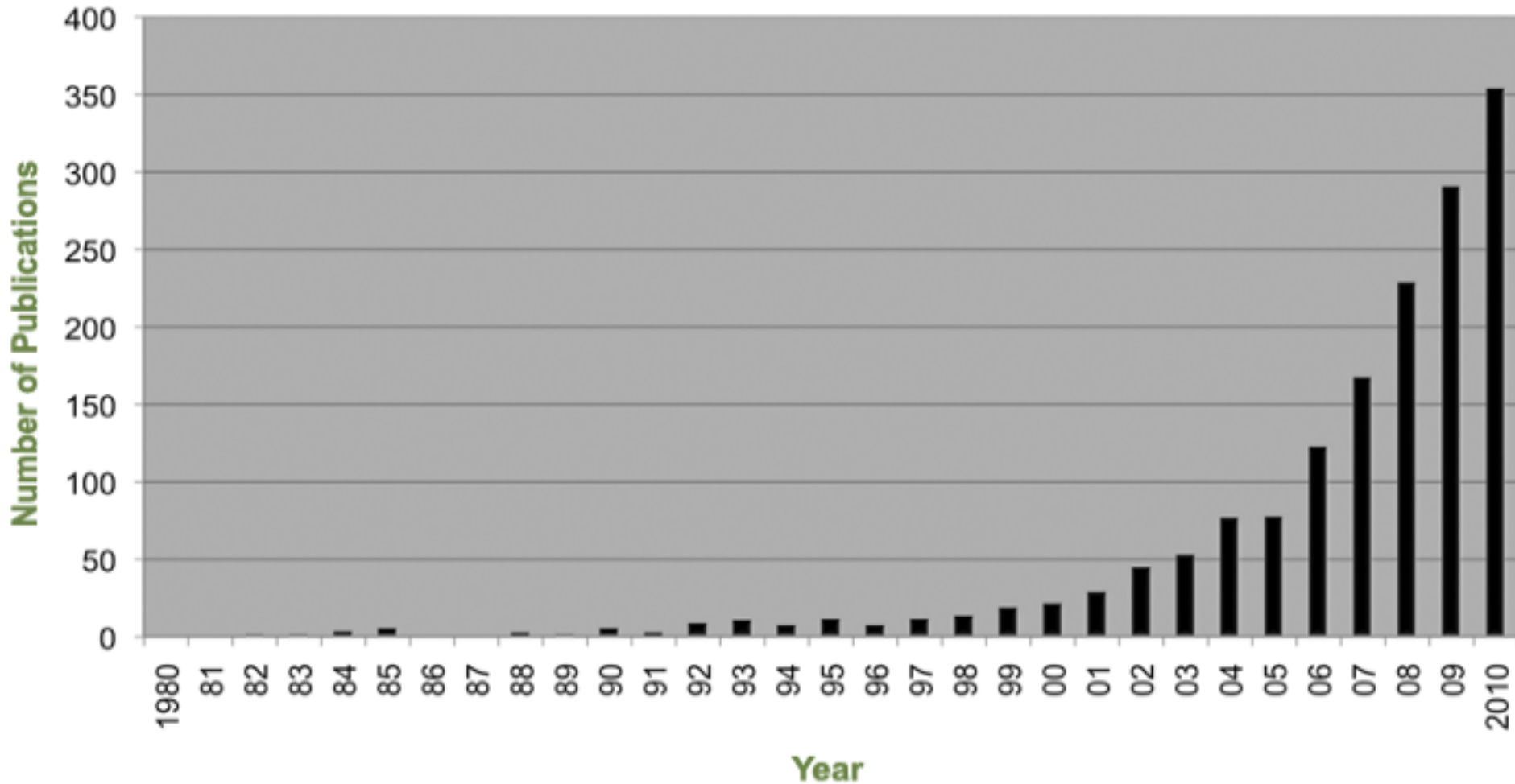
time.com

Mindfulness Research Centers

- Columbia
- Duke
- Eisenhower Medical Center
- Harvard
- Oxford
- Kaiser Permanente
- Scripps
- Stanford
- U Mass Medical School
- UCLA
- UCSD
- Numerous Programs Worldwide

Growth in Mindfulness Research

Figure 1. An example of growth in the mindfulness research literature across 30 years, 1980 - 2010



Notes. Results obtained from a search of the term "mindfulness" in the abstract and keywords of the ISI Web of Knowledge database on Feb. 5, 2011. The search was limited to publications with English language abstracts.

Summary of Research Findings

- **Physical Health**
 - Reduces stress, chronic pain, headaches, blood pressure, cholesterol
 - Improves immune function, sleep
- **Mental Health**
 - Reduces anxiety, depression, substance use
 - Helps OCD, eating disorders, emotion regulation
- **Healthy & Workplace Populations**
 - Reduces stress
 - Improves immune response, sleep, overall well-being



Happiness

© Mike Baldwin / Cornered



Changes Brain Regions



Your source for the latest research news

[Share](#) [Blog](#) [Cite](#)

Science News

Mindfulness Meditation Training Changes Brain Structure in Eight Weeks

ScienceDaily (Jan. 21, 2011) — Participating in an 8-week mindfulness meditation program appears to make measurable changes in brain regions associated with memory, sense of self, empathy and stress. In a study that will appear in the January 30 issue of *Psychiatry Research: Neuroimaging*, a team led by Massachusetts General Hospital (MGH) researchers report the results of their study, the first to document meditation-produced changes over time in the brain's grey matter.



Testing Performance

Decreased mind-wandering

Improved working memory capacity

Better performance on GRE reading comprehension



Mrazek, MD et al. (2013) *Psychological Science*, 24 (5), 776-781

Job Performance

Mind Fitness

**Improving Operational Effectiveness and
Building Warrior Resilience**

By ELIZABETH A. STANLEY and AMISHI P. JHA



Driving Safety

- Mindfulness May Improve Driving Performance
 - Increases environmental awareness
 - Blocks out distractions
 - Helps to quickly identify hazards
 - Young adults lower in mindfulness texted more



Fedlman, G. et al. (2011) *Personality & Individual Differences*, 51 (7), 856-861
Kass, S.J. et al. (2011) *Mindfulness*, 2 (4), 236-241

UNIVERSITY
OF
CALIFORNIA

Mindful HEALTH & SAFETY

• Cultivating Present Moment Awareness in the Workplace •



University of California, Irvine [Environmental Health & Safety](#) (EH&S) is collaborating with the [Susan Samueli Center for Integrative Medicine](#) to research the impact of mindfulness on workplace health and safety. Sponsored by [University of California Office of the President Risk Services](#), this project seeks to offer a complementary paradigm for creating safe and healthy workplaces across a variety of industries.

© 2014 Regents of the University of California

Search

SUBSCRIBE TO MONTHLY SPAM-FREE POSTS

Email address

ex: someone@mydomain.com

Subscribe (opt out any time)

RECENT POSTS

[Skeptical of Mindfulness?](#)

[Mindfulness: An Antidote](#)

[Mind Wandering & Happiness](#)

The logo for the Mindful Health & Safety Program features a stylized sun icon with yellow rays and a blue center. To the right of the icon, the word "Mindful" is written in a large, bold, blue font, with the "i" having a blue dot. To the right of "Mindful", the words "HEALTH & SAFETY" are written in a smaller, blue, all-caps font. Below "Mindful", the word "PROGRAM" is written in a large, blue, all-caps font.

Mindful HEALTH & SAFETY PROGRAM

- Adaptation of MBSR
 - Delivered by qualified mindfulness instructors
- 1-hour orientation session
- Formats (can be customized)
 - Original (22 hours)
 - 8 weekly 2-hour sessions + 6-hour retreat
 - Abbreviated (12 hours)
 - 10 weekly 1-hour sessions (one is a 3-hour retreat)

Informal Pilot

EH&S Staff & Facilities Managers



- Approximately 30 participants
- No active control group
- Abbreviated protocol (12 vs. 22 hours)
- Findings: Improved attention & reduced stress

Formal Pilot



- Sample
 - 50 Nurses
 - UC Irvine Medical Center
 - High injuries & errors
 - Compensation - 22 CEUs
- Random Assignment
 - Experimental
 - Mindfulness
 - Active Control
 - Health education

Coming into the Moment



Mindful Handwashing

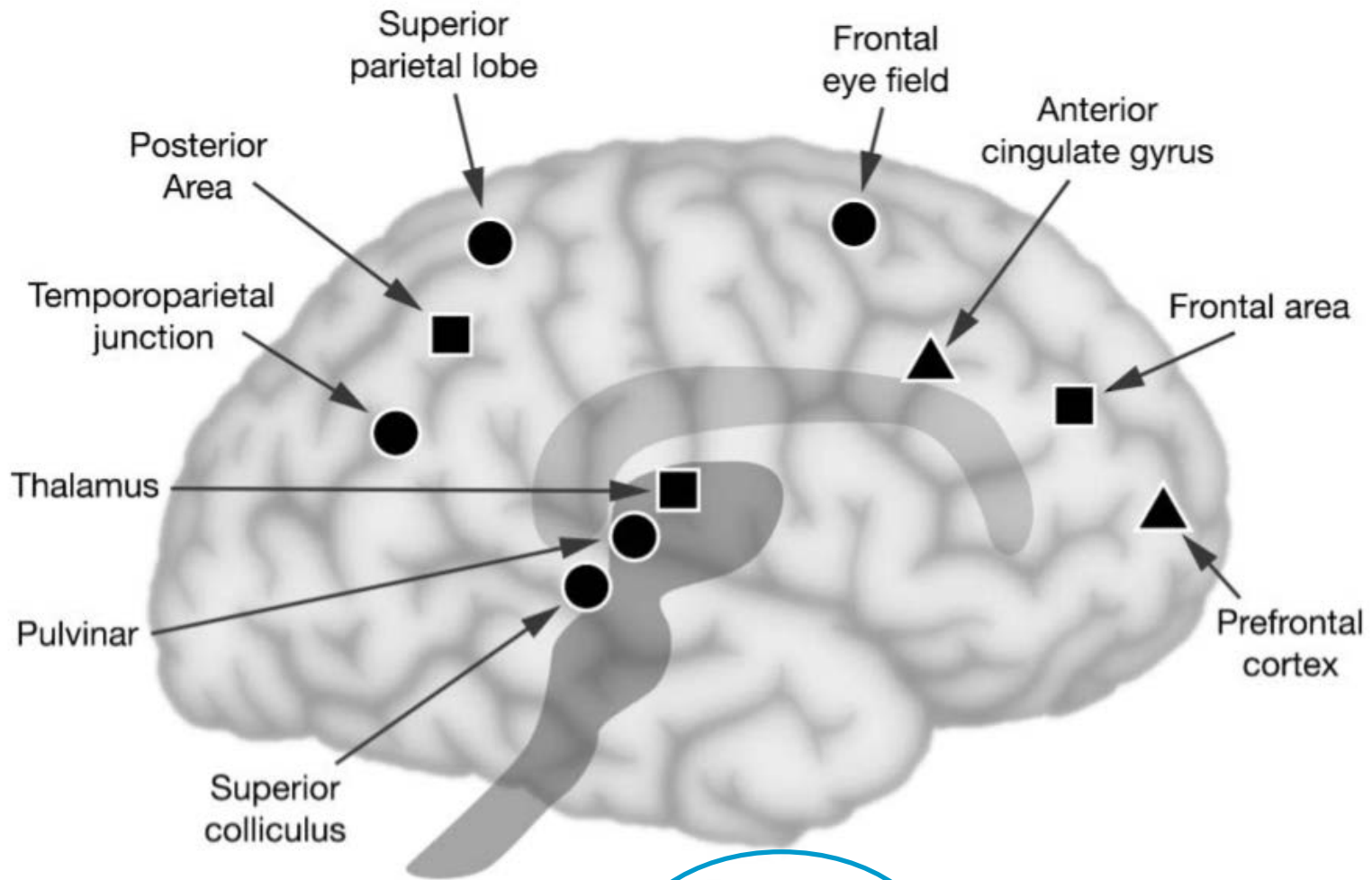


SURVEY Results



- Mindfulness
 - Mindful Attention Awareness Scale
- Stress
 - Perceived Stress Scale
- Work Engagement
 - Utrecht Work Engagement Survey
- Burnout
 - Maslach Burnout Inventory

Attention Networks



Awaiting Results (Summer 2016)

- Work-Related Injuries
 - Occupational Health data
- Work-Related Errors
 - Self-Report
- Sick Days
 - HR data
- Job Retention
 - HR data
- Organizational Costs
 - Workers' Compensation data & medical premiums



Participant Feedback



TOTAL WORKER HEALTH[®]

ADVANCING WORKER SAFETY, HEALTH, AND WELL-BEING

