

A photograph of a construction site during the day. In the foreground, three construction workers wearing hard hats and high-visibility vests are walking. In the background, a white pickup truck is parked. The scene is brightly lit, suggesting a sunny day.

Drone Use in Construction

McKenzie Lewis

Manager of Field Solutions

McCarthy Building Companies, Inc.

Southern California Division

FAA sUAV Part 107 Licensed Pilot

Agenda



First Half – Discuss Rules and Regulations on Commercial Drones



Second Half – Overview of Drone Applications for Safety and Construction



Q&A

Operator Types



Hobbyist



Part 107



Section 333 Exemption Holder

Operating Drones Safely and Legally



REGISTER FOR PART 107
EXAM -
[HTTP://CANDIDATE.CATSTE
ST.COM/SITESHARCH.PHP](http://candidate.catstest.com/siteSearch.php)



STUDY FOR THE TEST -
[HTTPS://3DR.COM/FAQ/](https://3dr.com/faq/)



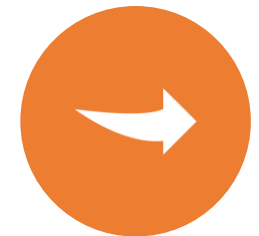
PASS THE TEST AND
REGISTER CERTIFICATE
WITH THE FAA -
[HTTPS://IACRA.FAA.GOV/IA
CRA/DEFAULT.ASPX](https://iacra.faa.gov/iacra/default.aspx)



PURCHASE A DRONE AND
REGISTER WITH FAA
([DRONEZONE.FAA.GOV](http://dronezone.faa.gov))

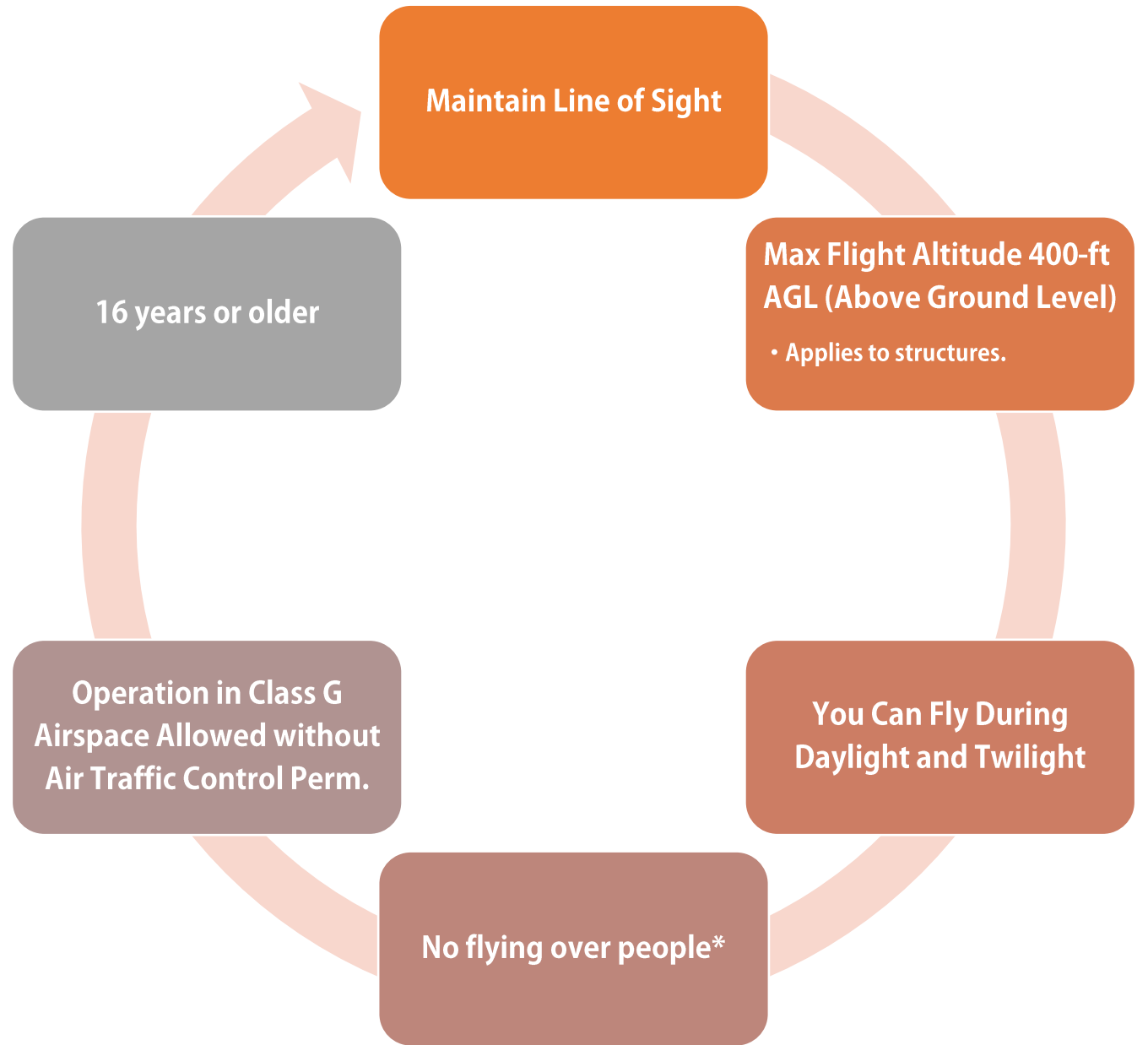


CHECK THE AIRSPACE -
WEBSITE - [AIRMAP.IO](http://airmap.io)



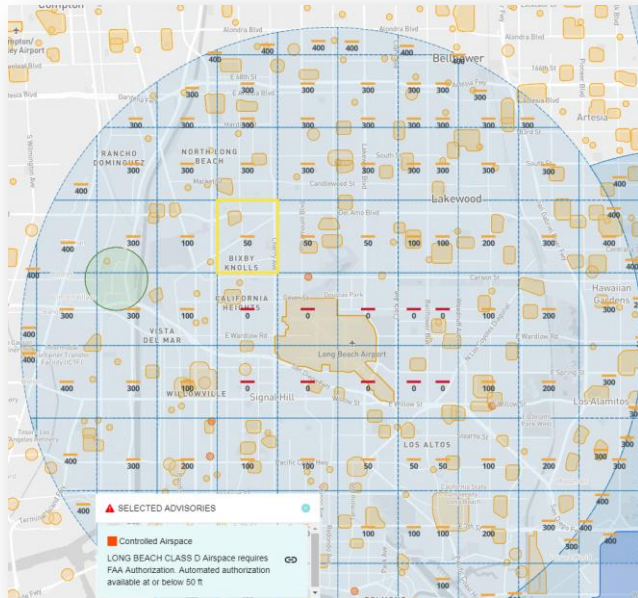
CONFIRM WITH LAND
OWNER

Highlighted Rules (FAA Part 107)



Airspace Difficulties (Airmap.io)

Airmap.io partnered with the FAA on LAANC, the Low-Altitude Authorization and Notification Capability, to make authorization in controlled airspace simple, efficient, and secure.



AREAS OF INTEREST

Irvine
33° 39' 32.68523" N 117° 50' 31.85511" W
67° F / 19° C

WHAT'S YOUR MISSION?

United States

Pick One

- Fly for Fun (Part 101E)
Guidelines for recreational drone use in the USA
- FAA Section 333 Exemption Holder
Guidelines for Section 333 exemption holders
- FAA Part 107 Certified
Guidelines for commercial/recreational drone us...

Optional

- AIRMAP Recommended Guidelines
These are advisory rules set by AirMap for US dr...

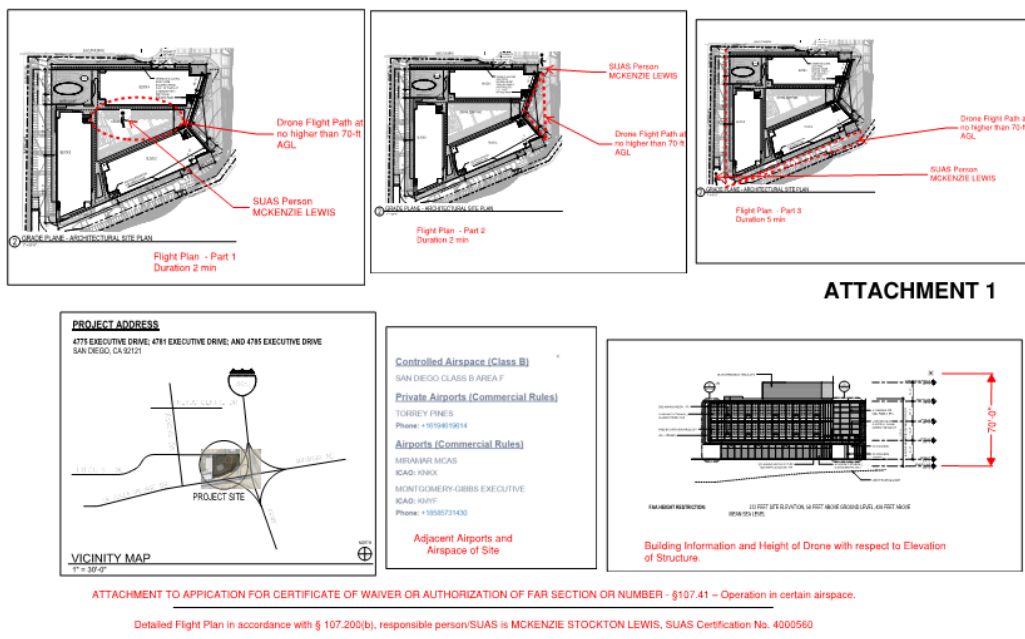
Required Rules

- Restricted and Special Use Airspace
There are many types of airspace restrictions in ...
- National Parks Public Use Limits
Use of unmanned aircraft within National Parks ...
- NOAA Regulated Overflight Zones
Office of National Marine Sanctuaries Regulations

AMA Club Fields

POWERED BY

Flight Approval - Construction Sites



- Communication with the Land Owner, flight plan submission.
- Submit Insurance Requirements to Fly on an active campus.
- Crane operator communication, if necessary.
- Use of a Visual Observer

Part 107 Accident Reports

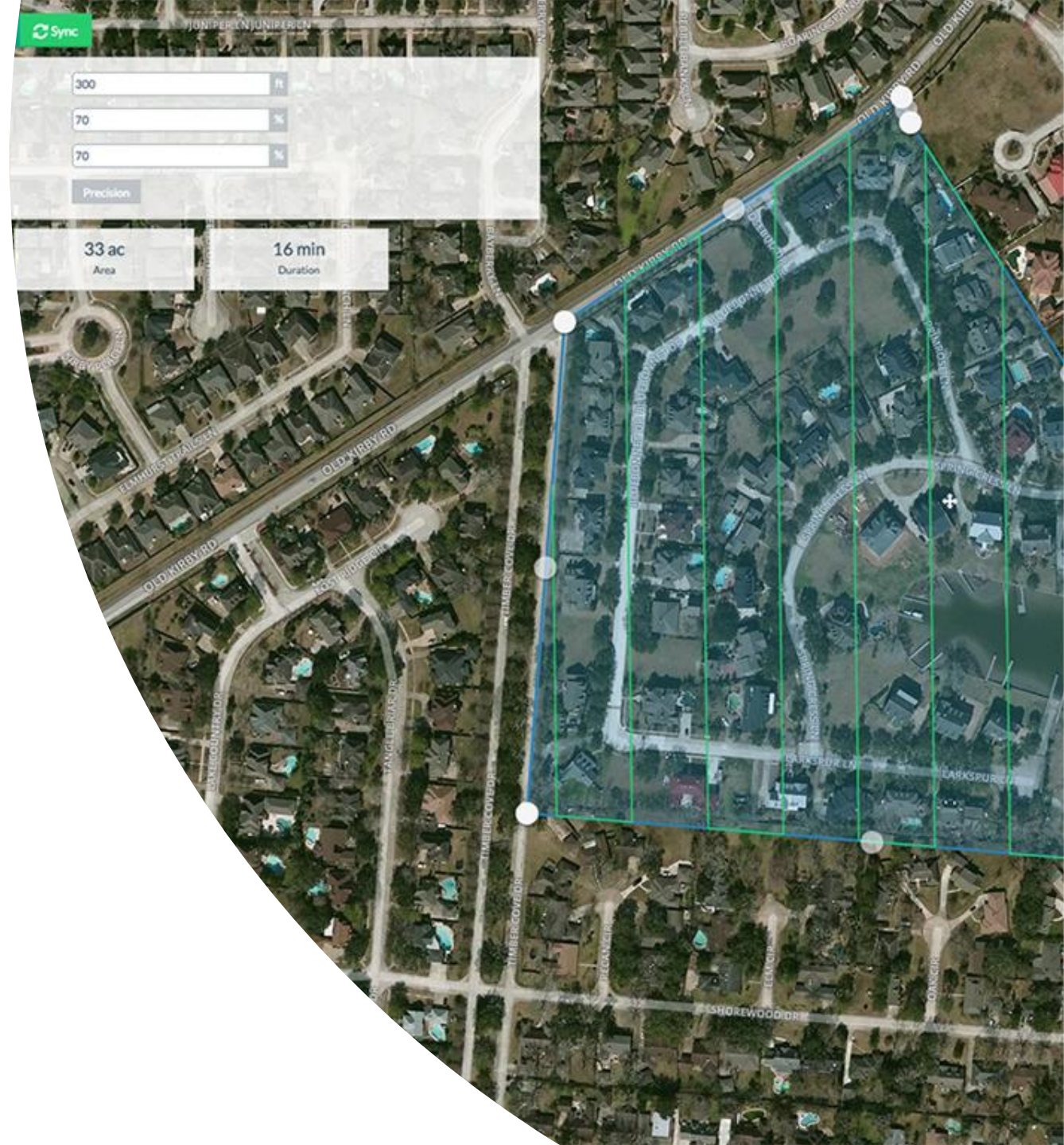
The remote pilot in command must report any sUAS accident to the FAA no later than 10 days after a Part 107 operation that meet the following criteria:

Serious injury to any person or any loss of consciousness; or

Damage to any property, other than the small unmanned aircraft, unless one of the following conditions is satisfied: The cost of repair (including materials and labor) does not exceed \$500; or The fair market value of the property does not exceed \$500 in the event of total loss.

Drone Applications

- Aerial Mapping - Dronedeploy/Pix4D
- Visual Inspections
- Logistics Planning
- Remote Site Visits
- Aerial Photography (Video and Photo)



Drone Applications (continued)



Safety



Reducing Exposure to Hazardous Substances and Radiation



Disaster Response and Dangerous Inspections

(Roof Inspections)



Surveying Power Lines



Documentation & Monitoring



**General Safety Inspections Large Land Projects
(Housekeeping, etc.)**

My Popular Applications

- Progress Photos/Exterior Site Photos
- Photogrammetry – 3d model from 2d photos
- 360 Aerial Photos for View Planning
- Milestone Documentation – Loma Linda Live Stream
- General Aerial Imagery
- Solar Sites



A dark, irregular ink blot with the word "Questions?" written in white text in the center. The blot is surrounded by a light, textured background with scattered dark specks.

Questions?